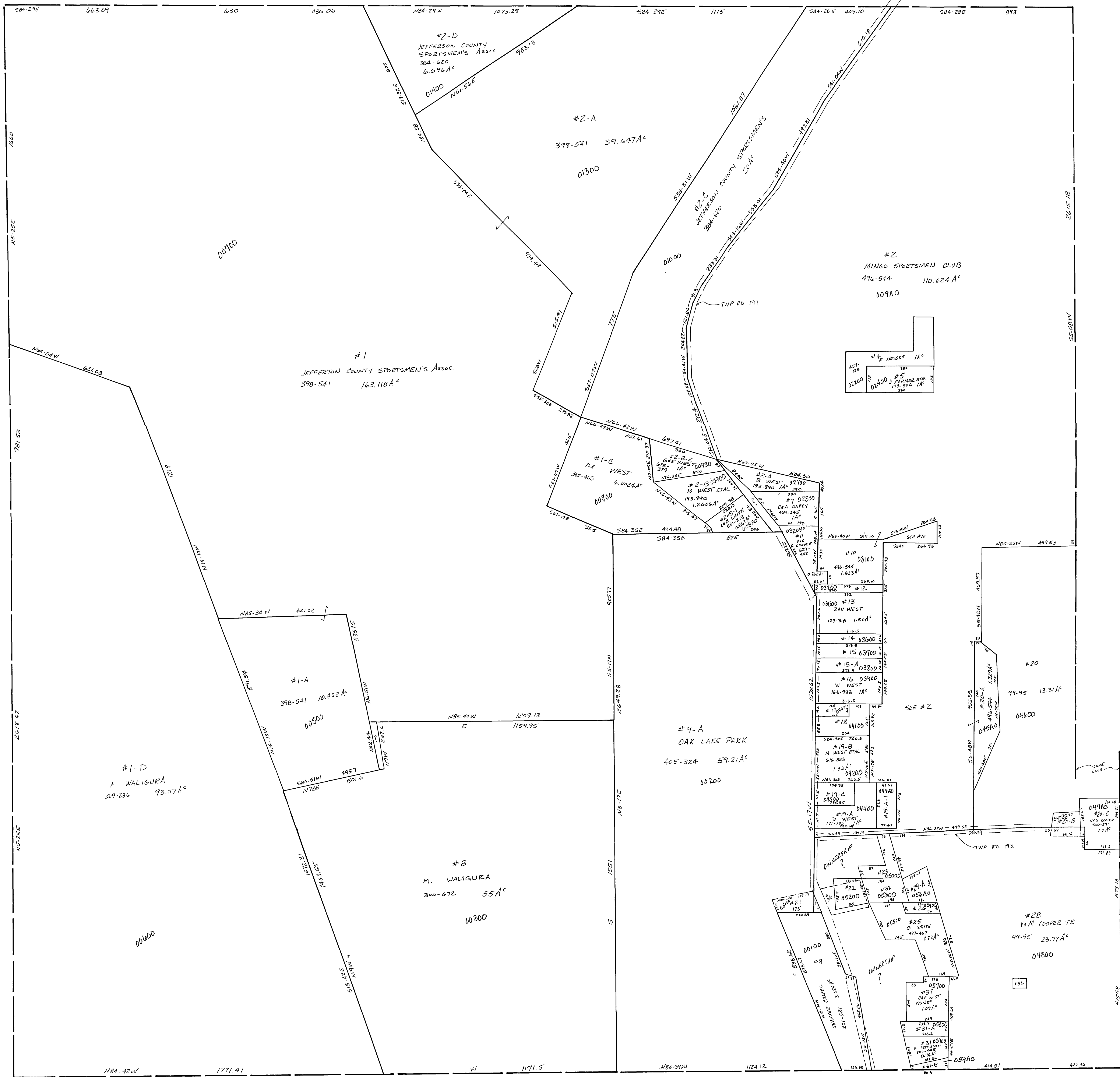


45-0800-



#12	E FREEMAN	118-244	0.252A <sup>c</sup>
#14	C HUMMANN	155-345	0.20A <sup>c</sup>
#15	JAC ANDERSON	55-254	0.474A <sup>c</sup>
#15-A	R SMITH	382-209	0.521A <sup>c</sup>
#17	O A TONEY	544-44	0.24A <sup>c</sup>
#18	L WEST	350-335	0.76A <sup>c</sup>
#19-C	D WEST ETAL	611-599	0.50A <sup>c</sup>
#19-A-1	D WEST	600-629	0.50A <sup>c</sup>
#20-B	V C COOPER	445-495	0.34A <sup>c</sup>
#22	V COOPER	202-767	0.50A <sup>c</sup>
#22	W MIRKEE	571-422	0.48A <sup>c</sup> ??
#23	F WEST ETAL	151-375	1.25A <sup>c</sup>
#24	S ATKINS	224-128	0.18A <sup>c</sup>
#29	C ATKINS ETAL	224-126	0.435A <sup>c</sup>
#31-A	M CHRISTIAN ETAL	565-732	0.39A <sup>c</sup>
#31-B	V COOPER	476-412	0.155A <sup>c</sup>
#36	S FALBO TR	523-445	0.02A <sup>c</sup>
#21	SHAFFER CHAPEL	221-581	0.397A <sup>c</sup>
#34	"	"	0.654A <sup>c</sup>

WAYNE TWP.  
SEC 8-T9-R3  
SCALE 1"=200'